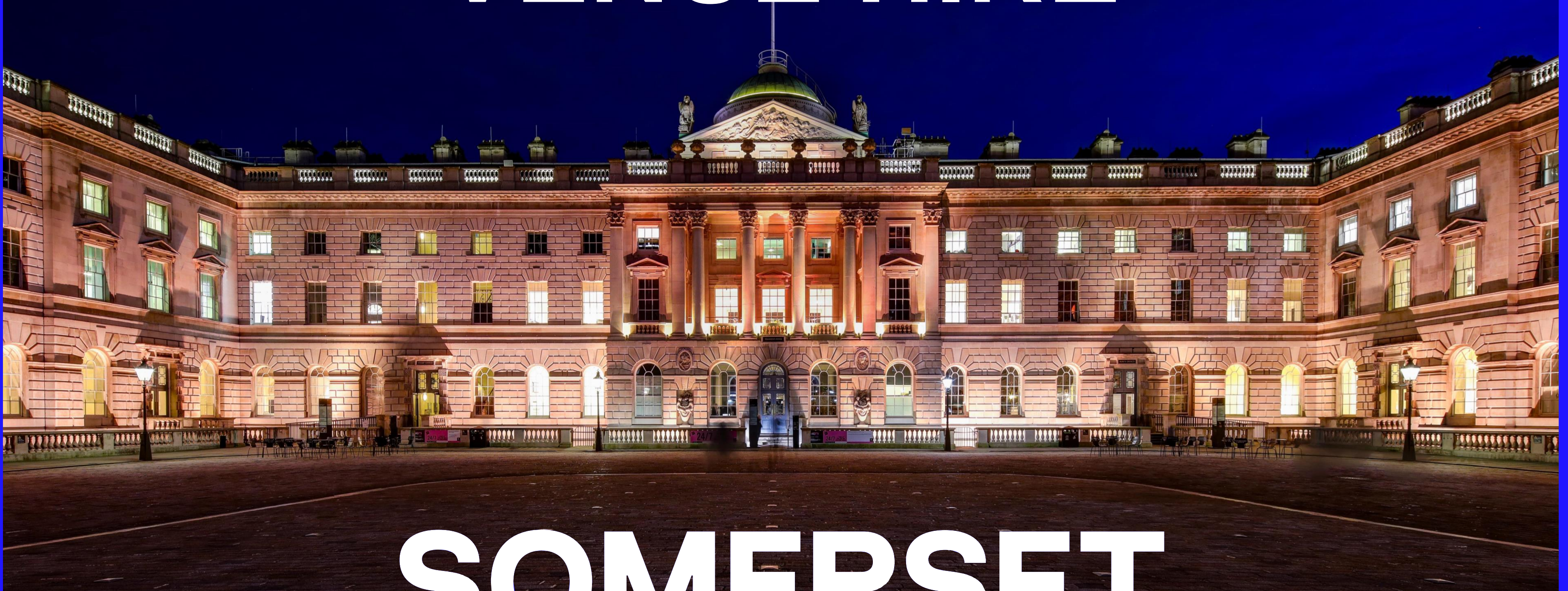


# VENUE HIRE



# SOMERSET HOUSE





# HOME OF CULTURAL INNOVATORS



# CONTENTS

ABOUT SOMERSET HOUSE.....5

OUR SPACES.....6

Portico Rooms .....6

Navy Board Rooms .....6

Seamen’s Hall .....6

River Terrace .....6

Embankment Galleries .....7

East Wing .....7

West Wing .....7

Lightwells & Deadhouse .....7

Edmond J. Safra Fountain Court .....8

Lancaster Rooms .....8

River Rooms .....8

Screening Room .....8

EVENT OFFERS & TYPES.....10

Summer Events .....10

Festive Packages .....10

Enhance the Experience with SKATE .....11

Brand Activations .....13

Film & Photography.....13

Weddings .....15

Enhance the Experience – Private Views & Tours .....17

CASE STUDIES & INSIGHT PAPERS.....19

OUR VALUES.....21

OUR ECOSYSTEM.....22

GET IN TOUCH.....23





**‘FROM AN ICE RINK, TO  
THE FILM SET OF RIDLEY  
SCOTT’S NAPOLEON, A  
CONCERT VENUE AND  
NOW A FOOTBALL PITCH,  
IS THERE ANYTHING  
SOMERSET HOUSE CAN’T  
BE TRANSFORMED INTO?’**

— Access All Areas





# ABOUT SOMERSET HOUSE

## *Step Inside, Think Outside*

As the home of cultural innovators, Somerset House is a site of origination, with a cultural programme offering alternative perspectives on the biggest issues of our time. In 2025, Somerset House celebrates its 25th birthday, marking its extraordinary transformation to one of London's best loved cultural spaces and home to one of the largest creative communities in the UK. To mark this milestone, there will be a special year of artistic innovation featuring genre-defying exhibitions, new commissions and events bringing audiences closer to the range of cross-disciplinary work from our unrivalled resident creative community, cementing Somerset House as a leading international arts destination.

From our historic site in the heart of London, we work globally across art, creativity, business, and non-profit, nurturing new talent, methods and technologies. Our resident community of creative enterprises, arts organisations, artists and makers, makes us a centre of ideas, with most of our programme home-grown. We sit at the meeting point of artistic and social innovation, bringing worlds and minds together to create surprising and often magical results. Our spirit of constant curiosity and counter perspective is integral to our history and key to our future.

**Run as an independent charity by the Somerset House Trust, all event hire income directly contributes to our diverse cultural programme, pioneering engagement & skills work, support of emerging artists and helps to maintain our historic Grade I listed site. You can be confident that your event will directly support an organisation offering immense value to an audience which goes far beyond your attendees.**





# OUR SPACES

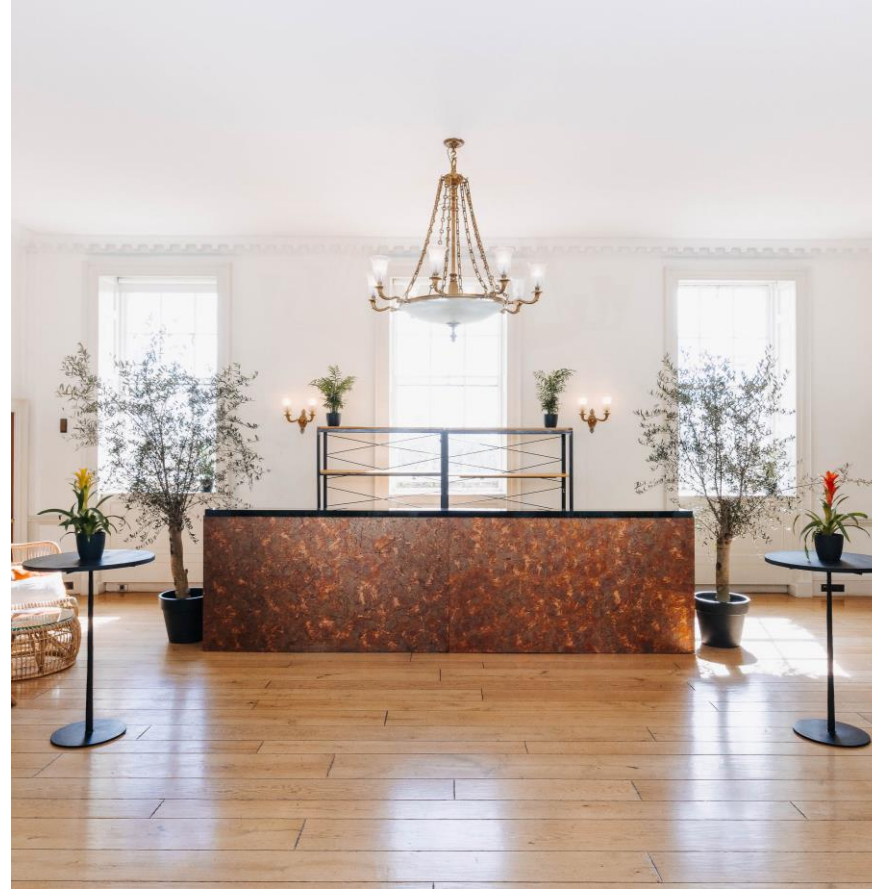


## PORTICO ROOMS

Located on the first floor of the South Wing, with original features, natural daylight and uninterrupted views of the London skyline the [Portico Rooms](#) are a spacious and versatile suite of rooms offering a contemporary and elegant location.

Included in your hire are two private balconies - whether you prefer to watch the sunset across the River Thames from the south facing balcony, or marvel at our sensational fountains from the north facing balcony, the Portico Rooms are a truly stunning venue for any event.

**CAPACITY:** 200 Standing, 100 Seated  
**SPACE DIMENSIONS:** 10m x 11.5m

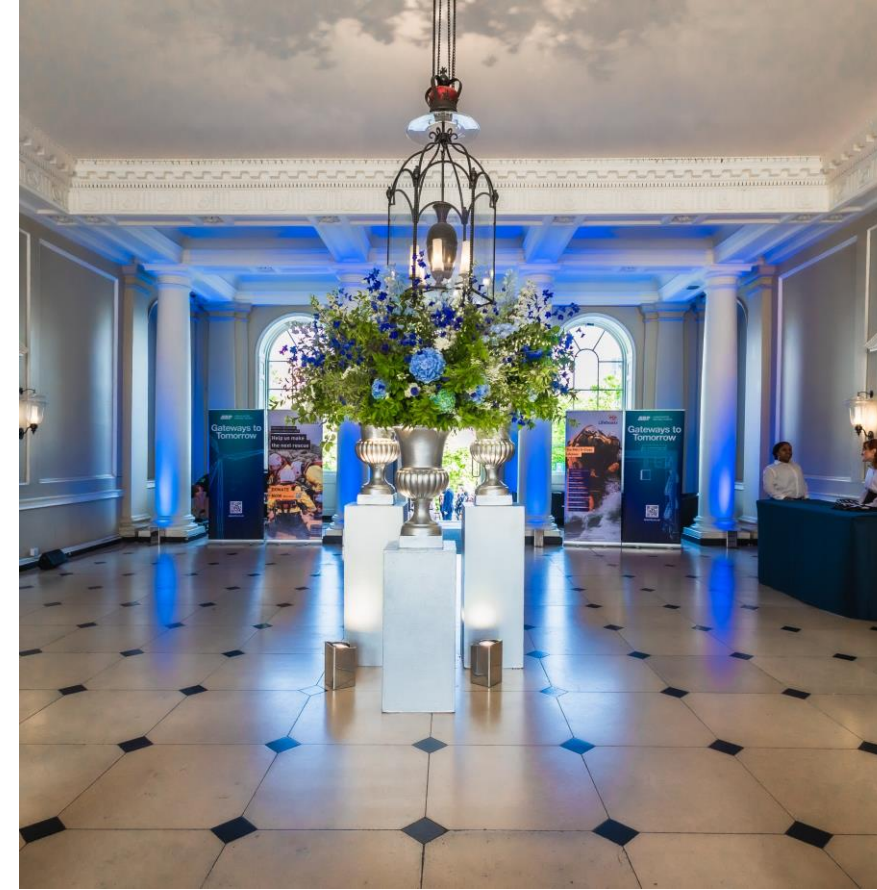


## NAVY BOARD ROOMS

Steeped in history, the [Navy Board Rooms](#) are an impressive suite of rooms with a distinctive sense of charm and heritage. Climbing the grand, sweeping Nelson Staircase is an experience in itself, as each flight is a one-off architectural work of art. Entering the main space, marble fireplaces and wooden floors create a grand atmosphere, with large sash windows offering panoramic views across the River Thames.

Originally home to the Navy Board, overseeing British naval affairs around the globe, the rooms are now a hugely popular venue for press days, fashion events, meetings, conferences, receptions, dinners and wine tastings.

**CAPACITY:** 100 Standing, 60 Seated  
**SPACE DIMENSIONS:** 10m x 5.5m

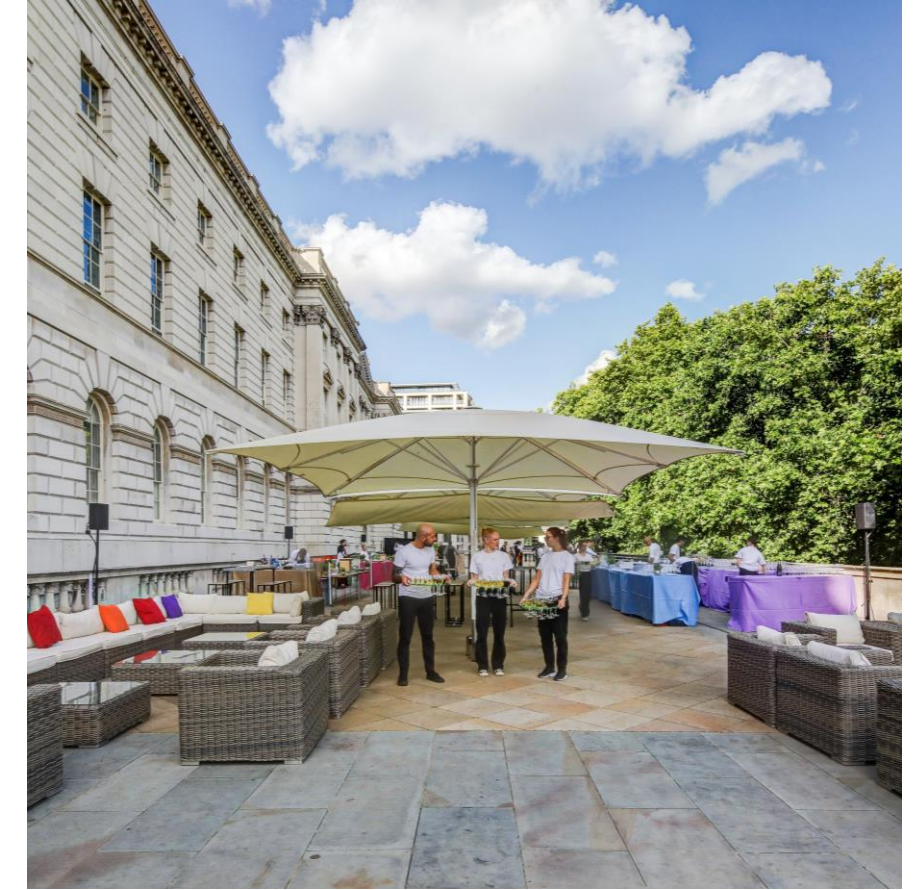


## SEAMEN'S HALL

The [Seamen's Hall](#), located on the ground floor of the South Wing, has marble floors, imposing Corinthian columns and large sash windows. With original period features including black and white marble flooring, it offers an air of expansive elegance, lending itself beautifully as an evening venue.

Entered via central doors from our stunning Edmond J. Safra Fountain Court, the hall leads directly out onto our exclusive River Terrace (a section of which is included) offering panoramic views of the Thames and surrounding iconic London landmarks.

**CAPACITY:** 200 Standing, 100 Seated  
**SPACE DIMENSIONS:** 17m x 10m



## RIVER TERRACE

Set against the backdrop of Somerset House's iconic 18th century façade and with sweeping views across the Thames, the [River Terrace](#) is one of our most exclusive spaces. A glamorous alfresco London setting to entertain guests in the warmer months, with the stunning Seamen's Hall is included in your hire as a wet weather contingency.

Perfect for summer parties, you can invite your guests to a private barbecue expertly planned by one of our caterers or simply enjoy a drinks reception while the London landmarks light up your event.

**CAPACITY:** 500 Standing  
**SPACE DIMENSIONS:** 49.5m x 11.7m



# OUR SPACES

7



## EMBANKMENT GALLERIES

Originally a barrel-vaulted barge house linked directly to the Thames, the [Embankment Galleries](#) are now a modern and adaptable events space. Spread over the ground floor and mezzanine level of the South Wing, this network of rooms have been reinvented to host Somerset House's most celebrated exhibitions.

The mezzanine level is most impressive for large scale dinners and receptions, while the entire gallery offers a spectacular setting for press days, fashion shows and conferences.

**CAPACITY:** 800 Standing\*, 340 Dinner

\*Up to 1,000 depending on set-up requirements

**SPACE DIMENSIONS:** 1059 sq.m.

Somerset House



## EAST WING

Located just across from our famous Edmond J. Safra Fountain Court, this venue offers a blank canvas space featuring beautiful high ceilings and large windows, with a series of open plan, interlinking rooms.

The [East Wing](#) offers an abundance of space and natural light, perfect for events including press days and drinks receptions, while proving equally popular with location managers. The East Wing combines ultramodern flourishes with neo-classical lines, conveying a real sense of occasion to your guests.

**CAPACITY:** 300-350 Standing

**SPACE DIMENSIONS:** 338 sq.m.

Venue Hire



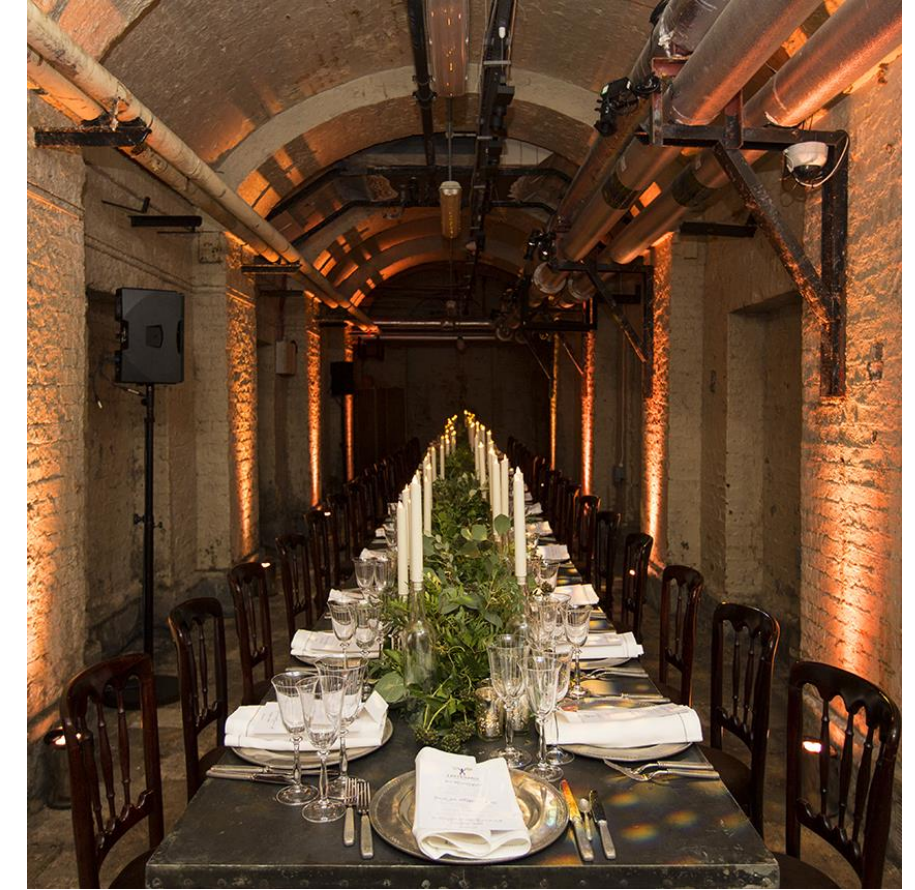
## WEST WING

Entering directly from the grandeur of the Edmond J. Safra Fountain Court, linked via spacious, stylish corridors and connecting doors, the [West Wing](#) can be adapted for a multitude of events.

With a selection of renovated rooms, this expansive area boasts light wooden flooring, beautiful fireplaces, high ceilings and ample natural light. The understated elegance of the West Wing has something to suit all tastes, with the blank canvas nature providing a fantastic backdrop for exhibitions, showcases, press days, product launches and experiential events.

**CAPACITY:** 500 Standing

**SPACE DIMENSIONS:** 679 sq.m.



## LIGHTWELLS & DEADHOUSE

Discover the unique architecture and unexpected hidden depths of Somerset House. The [Lightwells and Deadhouse](#), hidden from the public gaze, are one level below our famous fountains.

The Lightwells are a long-time favourite of location managers for major film and television series. The Deadhouse, meanwhile, runs directly beneath the Edmond J. Safra Fountain Court, and its eerie memorials set into the walls help lend this underground tunnel an ambience all its own. With an abundance of secret nooks and crannies, this fascinating space is perfect for creative and surprising events with an edge.

**CAPACITY:** 200 Standing

**SPACE DIMENSIONS:** 188 sq.m.



# OUR SPACES

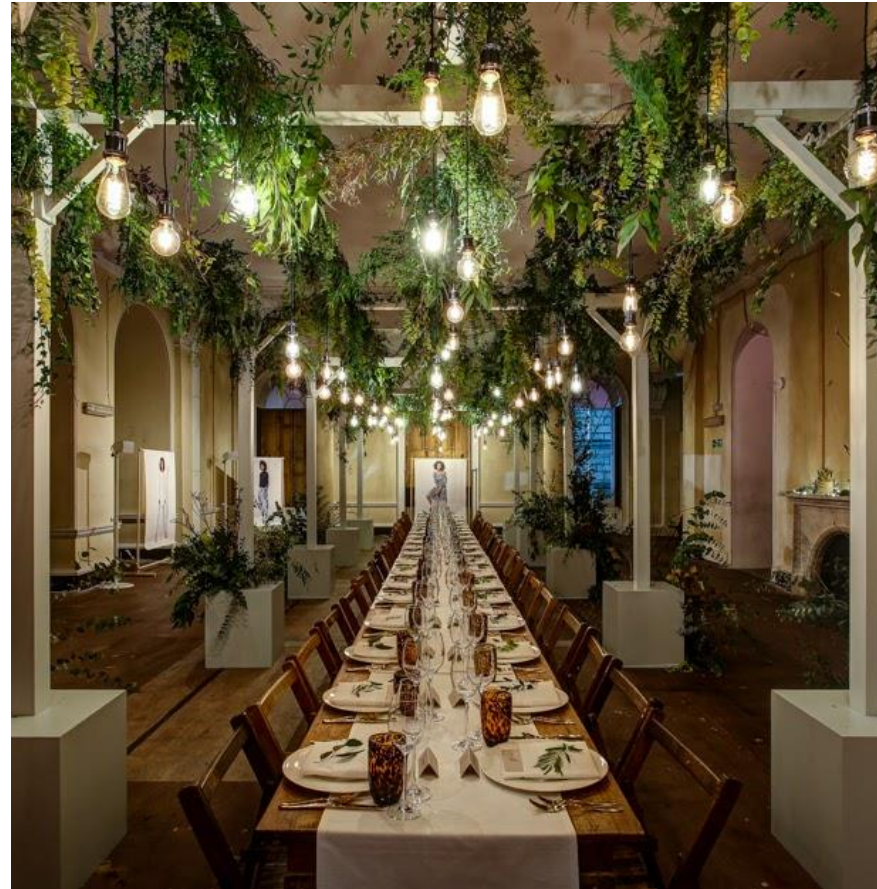


## EDMOND J. SAFRA FOUNTAIN COURT

Just a few short steps from the bustling activity of the Strand, in the heart of London, the [Edmond J Safra Fountain Court](#) is centred around the iconic fountains and glorious 18th century architecture.

Popular with the public year-round, Somerset House's most iconic experiences, staged in its courtyard, cannot be created elsewhere. This neoclassical backdrop offers a spectacular oasis for bespoke and unforgettable events.

**CAPACITY:** 3,000 Standing, 800 Dinner  
**SPACE DIMENSIONS:** 60.3m x 44.2m



## LANCASTER ROOMS

Located in our New Wing, the [Lancaster Room](#) is unlike any other venue at Somerset House. The aesthetically raw finish of the room, with dramatic pillars, high ceilings and exposed floorboards set against the stunning views over the Thames takes the original features and adds a contemporary cutting edge.

With its own private entrance, this venue has a huge potential for dressing and is the ideal choice for creatives - particularly popular for immersive and experiential events, product launches, fashion shows and photoshoots.

**CAPACITY:** 220 Standing, 110 Dinner, 150 Theatre, 120 Catwalk  
**SPACE DIMENSIONS:** 17.4m x 8.7m



## RIVER ROOMS

The [River Rooms](#) are a versatile suite of rooms situated in the New Wing, with a creative and raw aesthetic. These interlinking, open plan rooms retain faint touches from their former tenants which are highlighted by the custom-built lighting tracks. The room is complete with dramatic original fireplaces and exposed brick archways.

With its own private entrance, this venue has a huge potential for dressing and is the ideal choice for creatives. It is particularly popular as a space for immersive and experiential events, product launches, fashion shows and photoshoots.

**CAPACITY:** 220 Standing  
**SPACE DIMENSIONS:** 162 sq.m.



## SCREENING ROOM

With fixed seating for 60 guests, and the possibility of adding 10 additional seats, the [Screening Room](#) offers an ideal space for presentations and lectures. With built in AV, you can sit back and let your event run smoothly and efficiently in this quiet, stylish space.

Offering a blank canvas, clients can brand the Screening Room as they wish. For a breath of fresh air, you can step outside and enjoy the nearby Embankment Galleries which host some of our major exhibitions.

**CAPACITY:** 70 Seated  
**SPACE DIMENSIONS:** 57 sq.m.



**'EVERYONE AND  
EVERYTHING AT  
SOMERSET HOUSE  
WAS A DELIGHT  
AND A DREAM'**

– Dentsu Creative





# SUMMER EVENTS

Set against the backdrop of Somerset House's iconic 18th century façade and with sweeping views across the Thames, the [River Terrace](#) is one of our most exclusive spaces and the perfect location for a standing reception.

The River Terrace is a glamorous alfresco London setting to entertain guests in the warmer months and [for the very first time, during June and September 2025, there will be a stretch tent in situ for exclusive use.](#)

Perfect for summer parties, you can invite your guests to a private barbecue expertly planned by one of our caterers or simply enjoy a drinks reception while the London landmarks light up your event.

See the full offer [here](#).



# FESTIVE PACKAGES



We are delighted that our popular Festive Party Package will be returning to Somerset House in 2025, the ideal setting for your winter party.

This year our package will return to the unbeatable [East Wing](#), the ideal setting for your winter party. With its own private entrance, accessible from the [Edmond J. Safra Fountain Court](#) - home to our iconic ice rink - this venue has a huge potential. The East Wing features beautiful high ceilings and large windows, with a series of open plan, interlinking rooms, providing a real sense of occasion to your guests.

Our package combines the perfect location for your winter party with all your food, drink and entertainment options taken care of. Our dedicated team will be on hand to ensure your guests enjoy a celebration like no other.

**All-inclusive packages from £145 + VAT per person. [See the full offer here.](#)**



# ENHANCE THE EXPERIENCE WITH SKATE



Somerset House

## 12 NOV 2025 – 11 JAN 2026

Hailed as one of the capital's favourite winter experiences, Skate at Somerset House heralds the start of the festive period. In conjunction with your party in the East Wing, you can add skate tickets or exclusively hire the rink for your guests.

### ADD TICKETS £27.50 +VAT PER PERSON

- Book large group sessions (non-exclusive) for up to 80 guests
- Sessions start on the hour and run for 45 minutes
- Skate boot hire included

### ADD AN EXCLUSIVE SESSION £8,500 +VAT

- Private session on the rink for up to 250 guests (minimum of 120 guests required)
- Skate boot hire included
- Multiple / back-to-back exclusive sessions available, subject to approval

All options listed above are only available in association with a venue hire and are subject to availability. Availability is limited after general on-sale.

Group bookings (for up to 40 guests), without a venue hire included, need to be made via the main ticketing line.

If you are looking to book an exclusive session without a venue hire, then please speak to the team.

Venue Hire



**‘IT REALLY DID HOUSE A MEMORABLE NIGHT...A BEAUTIFUL SETTING BUT EQUALLY, THE TEAM ON THE NIGHT WERE INCREDIBLE, EXTREMELY FRIENDLY, PERSONABLE AND ATTENTIVE...THE ATTENTION TO DETAIL WAS SECOND TO NONE AND EQUALLY PERSONABLE WHICH WE VALUE!’**

– MUBI



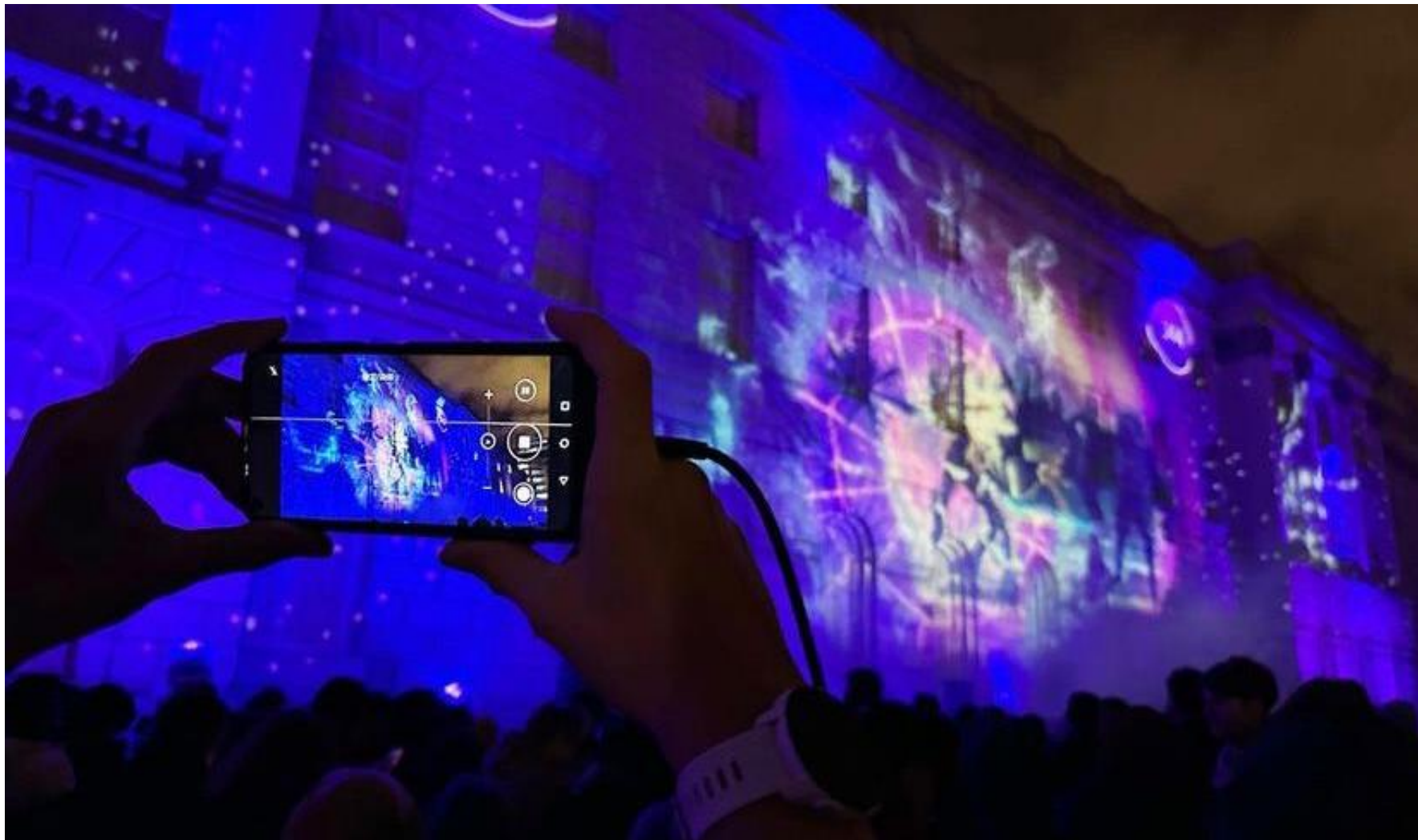


# BRAND ACTIVATIONS

Somerset House is one of London's most vibrant cultural hubs and guarantees a constant stream of people from all walks of life as they enjoy what our cultural programme has to offer.

As well as spectacular internal spaces for events, Somerset House has exciting external, public-facing brand activation locations on-site.

[See our Brand Activation Brochure here.](#)



# FILM & PHOTOGRAPHY



**A leading location in the heart of London.**

Including:

- Elegant blank canvas rooms
  - Sweeping staircase
  - Atmospheric lightwells
  - Underground tunnels and back streets
  - Picturesque terraces
  - A spectacular courtyard
  - Balconies
  - A series of commanding roofs
- and all manner of interesting, lesser-known spaces...

Our flexibility and ability to source spaces on-site, featuring both the historic and the contemporary, means we are always likely to have a location to raise the bar for your brief



**‘IT WAS DEFINITELY ONE OF THE BEST EXPERIENCES I’VE HAD PERSONALLY WORKING WITH A VENUE AND I KNOW OUR PRODUCTION TEAM ALSO FOUND THE PROCESS AND THE HELP YOU WERE ABLE TO GIVE US REALLY USEFUL.’**

— HK Strategies





# WEDDINGS

Somerset House offers a beautiful setting for a wedding, combining historical elegance with contemporary style. Nestled along the River Thames, our stunning building highlights magnificent architecture and beautiful views, making it the perfect backdrop. Hosting your wedding here promises an unforgettable experience.

Located on the first floor of the South Wing, with original features, natural daylight and uninterrupted views of the London skyline, the Portico Rooms and Navy Board Rooms are a spacious and versatile suite of rooms offering a contemporary and elegant location, with a distinctive sense of charm and heritage.

Portico Rooms include two private balconies — whether you prefer to watch the sunset across the River Thames, or marvel at our sensational fountains — this is a stunning venue, perfect for a ceremony or a dinner reception.

Also located on the first floor of our South Wing, is the Navy Board Room. Its marble fireplaces and wooden floors create a grand atmosphere, with large sash windows offering panoramic views across the River Thames. Originally home to the Navy Board, overseeing British Naval affairs around the globe, the main Navy Board Room is the perfect setting for either an intimate ceremony with loved ones, or post-ceremony reception area.

One of the fantastic benefits of having your wedding at Somerset House is the opportunity to have photographs taken in our picturesque Edmond J. Safra Fountain Court with its dancing fountains (seasonal).

[See our full Wedding Brochure here](#)

Wedding and Engagement Photography and Proposal Packages are also available.





**‘SOMERSET HOUSE WAS THE PERFECT SETTING FOR MY CLIENTS’ INTIMATE SUMMER WEDDING. THE PORTICO ROOMS PROVIDED A STUNNING BACKDROP, WITH THE BALCONY OFFERING BREATHTAKING VIEWS OVER THE THAMES — AN UNFORGETTABLE EXPERIENCE FOR THE COUPLES AND THEIR GUESTS.**

**THE TEAM WAS A PLEASURE TO WORK WITH — RESPONSIVE, HELPFUL, AND SUPPORTED BY A FANTASTIC LIST OF SUPPLIERS, MAKING THE PLANNING PROCESS SEAMLESS.’**

— Rose Francis Events





# ENHANCE THE EXPERIENCE – PRIVATE VIEWS & TOURS

17



## SEE SOME OF OUR UNIQUE, EXPERIENTIAL OPPORTUNITIES

From season to season, our diverse cultural programme is ever changing, offering myriad opportunities to enhance your event and provide guests with an unforgettable experience at Somerset House.

### GUEST TICKETS

Surprise your guests with tickets to an exhibition or one of our live events alongside your event.

### PRIVATE VIEWS

Combine your event with exclusive access to one of our current exhibitions.

### EXHIBITION TOURS & TALKS

Offer your guests a unique insight into one of our exhibitions with a private tour. Alternatively, give your guests an exclusive curated talk on the themes of the exhibition before exploring the show.

### ‘BEHIND THE SCENES’ TOURS

Discover evidence of Tudor intrigue and Georgian Enlightenment, of scientific curiosity, naval power and extravagant entertainments by enhancing your event with one of our many tours. These cover the rich history of the neoclassical building and its place in contemporary culture - not only as a global platform for creativity but also as a popular location for Hollywood blockbusters and major TV series. Your guide will lead the group from the intricate lightwells to the atmospheric, subterranean Deadhouse, visiting elegant staircases and the iconic Edmond J. Safra Fountain Court.



**'I LOVE SOMERSET  
HOUSE. IT FEELS LIKE  
HOME. THE TEAMS ARE  
ALWAYS SUPER FRIENDLY  
AND GO OUT OF THEIR  
WAY TO HELP!'**

– SABIRAH





# CASE STUDIES

Discover how Somerset House, with its dynamic spaces, innovative design, and unique ambiance, can bring your vision to life and create an unforgettable experience for your guests.

Whether you're planning a brand activation, celebration, meeting, or simply seeking fresh, our case studies offer valuable insights for your next event.

Head to our [website](#) to find out more.



# INSIGHT PAPERS



At Somerset House, our curated insight papers and industry events offer event professionals forward-thinking perspectives on the evolving landscape of brand experiences.

**TRIBE & TRUSTED** examined how successful brand activations build trust by aligning with the values and outlooks of their audiences. The insight paper revealed that authenticity, exclusivity, and shared experiences are key to creating connections that last beyond the event itself.

**LISTEN UP!** focused on the evolving landscape of business events, emphasising the importance of generational diversity, attention management, and the balance between technology and human connection in event design.



**‘THANK YOU VERY MUCH FOR EVERYTHING, IT WAS PERFECT. WE REALLY DID THINK THE EVENT WAS EXCELLENT, THANK YOU FOR ALL YOUR HARD WORK!’**

— Associated British Ports







Somerset House

## DIVERSITY & INCLUSION

We are committed to building a diverse and inclusive community reflecting the diversity of our society. A community where everyone feels valued, where their contribution matters and where they can reach their full potential, irrespective of their background, identity or circumstances. We aim to ensure the diversity of all our staff reflects our society as fully as possible. Similarly, we aim to be home to a resident community of artists and enterprises from an equally diverse range of situations, backgrounds, and disciplines. Ongoing initiatives include running the Black Business Incubator.

## ANTI-RACISM

Somerset House is committed to being actively anti-racist and publicly releases updates on the actions it is taking in relation to its Anti-Racism Pledge every six months. We recognise that this is a journey. We have divided our focus into 5 key areas: History, Community, Workforce & Recruitment, Language and Procedures & Policy. A comprehensive list of our current actions can be found [here](#).

## SUSTAINABILITY

Sustainability and responsible event management are of paramount importance to Somerset House and, by extension, our Accredited Suppliers. You can download our sustainability booklet, outlining what we are up to and top tips on how to host a sustainable event at Somerset House, [here](#).

## OPT-IN TO SUPPORT THE YOUNG TALENT FUND

Somerset House's Young Talent Fund supports the next generation of early career creatives and artists to fulfil their potential, by providing financial relief to resident artists and opportunities to under-represented young people aged 18-25. If you would like to support this fund by making a donation please speak to a member of our team. Your support will help to secure a future for our creative community for many years to come.

## LONDON LIVING WAGE EMPLOYER

Somerset House is proud to be an accredited Living Wage payer. We pay all our staff and sub-contractors the London Living Wage.



Venue Hire



# OUR ECOSYSTEM

## 3.1M

visitors annually

## 65

Black Business incubator businesses

## 500,000 SQ. FT

grade listed site

## 133

creative enterprises occupying 194 offices  
across c 72,000 sq.ft

## 62

Somerset House Studios artists and their  
teams in over 15,000 sq.ft of studio space

## 262

days of free exhibitions annually

## 550

members of the creative co-working space  
Somerset House Exchange

## 259k

engage with our digital programme

## 304

creative-tech and maker members from  
77 different organisations at Makerversity  
which provides specialist workshops.

## 1000+

young people aged 18-30 engage with our  
career development programme





# GET IN TOUCH



## CONTACT

[events@somersethouse.org.uk](mailto:events@somersethouse.org.uk)  
+44 (0)20 7845 4618  
[somersethouse.org.uk/venue-hire](https://somersethouse.org.uk/venue-hire)

## FOLLOW

Instagram: [@somersethouse\\_venuehire](https://www.instagram.com/somersethouse_venuehire)  
LinkedIn: [Venue Hire at Somerset House](https://www.linkedin.com/company/venue-hire-at-somerset-house)

## WATCH

Our [Promo Video](#)

## FIND

Somerset House, Strand, London WC2R 1LA

### BY LONDON UNDERGROUND

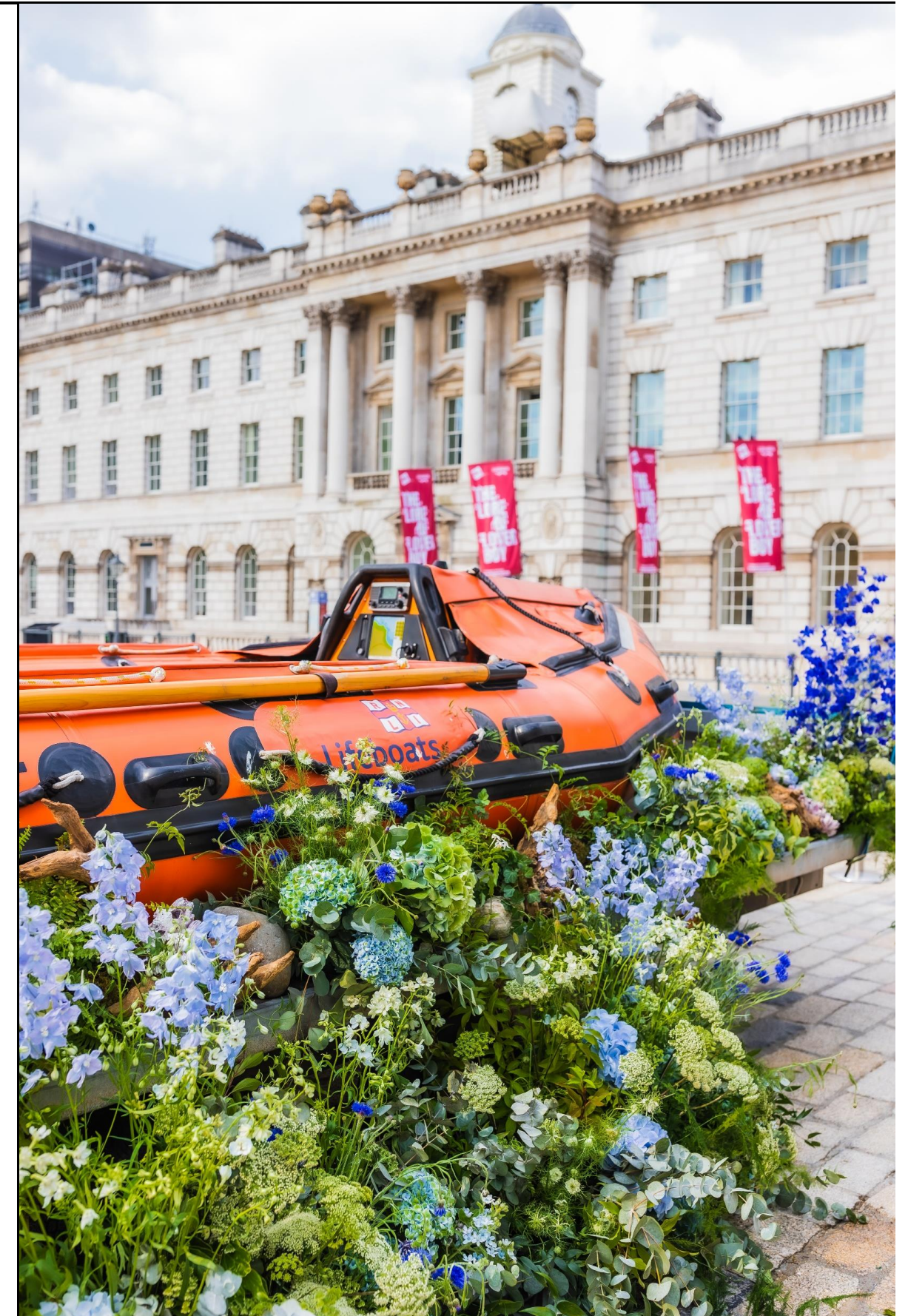
Temple (Circle & District lines; 250m, 5 mins)  
Covent Garden (Piccadilly line; 650m, 8 mins)  
Charing Cross (Bakerloo & Northern lines; 700m, 10 mins)  
Embankment (Circle & District lines; 700m, 10 mins)  
Waterloo (Bakerloo, Waterloo & City, Jubilee & Northern lines; 800m, 11 mins)

### BY RAIL

Charing Cross (700m, 10 mins)  
Blackfriars (1km, 13 mins)  
Waterloo (1km, 13 mins)

### BY RIVER

River bus services RB1, RB2 and RB6 all stop at Embankment Pier, roughly 600m from Somerset House





**STEP INSIDE  
THINK OUTSIDE**