

# EXCLUSIVE SKATE EVENTS



# SOMERSET HOUSE



# HOME OF CULTURAL INNOVATORS

- MUBI

# SKATE AT SOMERSET HOUSE



**11 NOV 2026 – 10 JAN 2026**

Hailed as one of the capital's favourite winter experiences, Skate at Somerset House heralds the start of the festive period.

## EXCLUSIVE SKATE SESSIONS

£8,500 +VAT PER SESSION

- Private session on the rink for up to 250 guests (minimum of 120 guests required)
- Skate boot hire included
- Multiple / back-to-back exclusive sessions available, subject to approval.

All options listed above are only available in association with a venue hire and are subject to availability. Availability is limited after general on-sale.

As an independent charity, all event hire directly supports Somerset House's cultural programme, pioneering outreach and the preservation of our Grade I listed site. Celebrate the season while making a meaningful contribution to a place where creativity thrives.

## MAKE A DAY OF IT!

Pair one (or more) of our back-to-back skating sessions with the hire of a bespoke event space to create a truly memorable experience. Whether you're planning a festive Santa's grotto, hosting gingerbread or wreath-making workshops, or serving mulled wine and seasonal cocktails, you can tailor every detail to suit your guests. Create an exclusive skate event at Somerset House with something for everyone to enjoy!

# OPTION 1: PORTICO & NAVY BOARD ROOMS

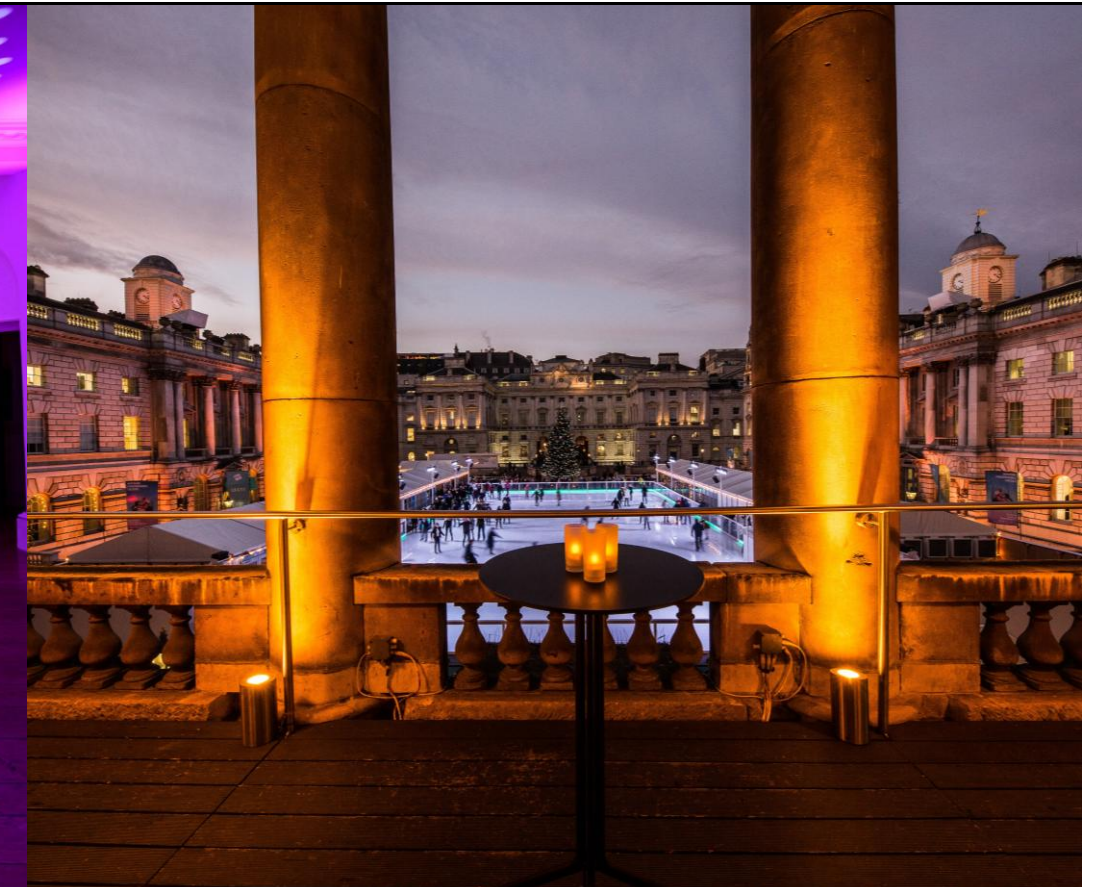
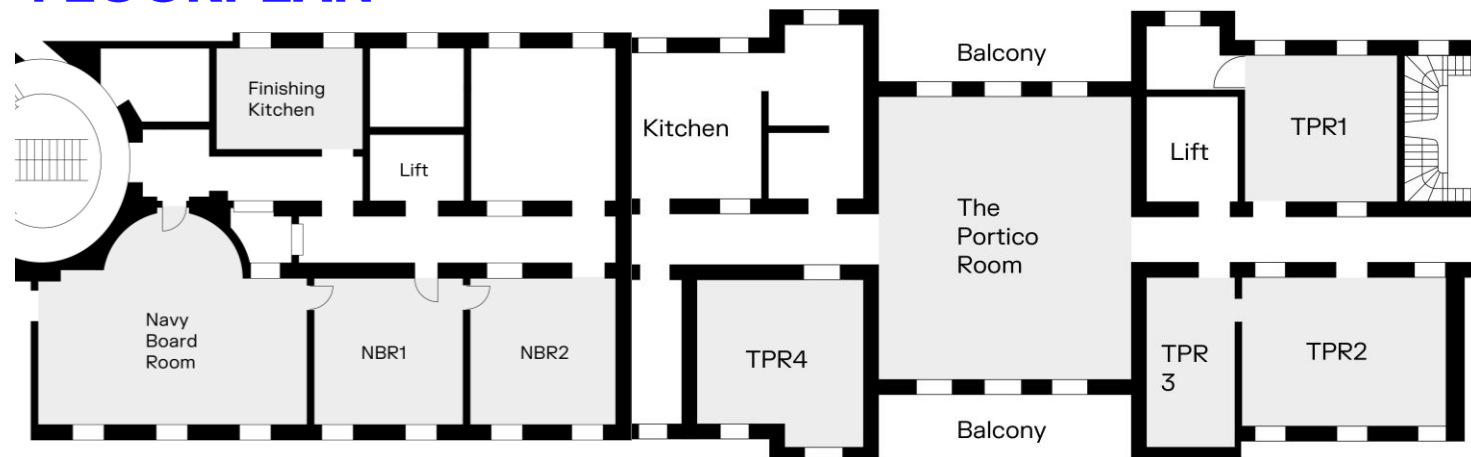
The [Portico Rooms](#) and [Navy Board Rooms](#) offer a spacious and versatile suite of rooms ideal for festive activities and experiences to complement your exclusive hire of the ice rink.

Your hire also includes access to two private balconies: one overlooking the iconic ice rink for a unique elevated view of the skating, and the other offering beautiful views across the London skyline illuminated with Christmas lights. Together, these spaces create an atmospheric and memorable setting for a standout winter event.

## HIRE FEE

	DAYTIME	EVENING	ALL DAY
SUPPLIER ACCESS	07:30 – 17:00	17:30 – 23:00	07:30 -23:00
GUEST ACCESS	08:30 – 16:00	18:30 – 22:00	08:30 – 22:00
HIRE FEE	£7,500 + VAT	£11,000 +VAT	£13,500 + VAT
ADDITIONAL HOURS	£1,000 + VAT per hour		

## FLOORPLAN



# OPTION 2: THE EMBANKMENT GALLERIES

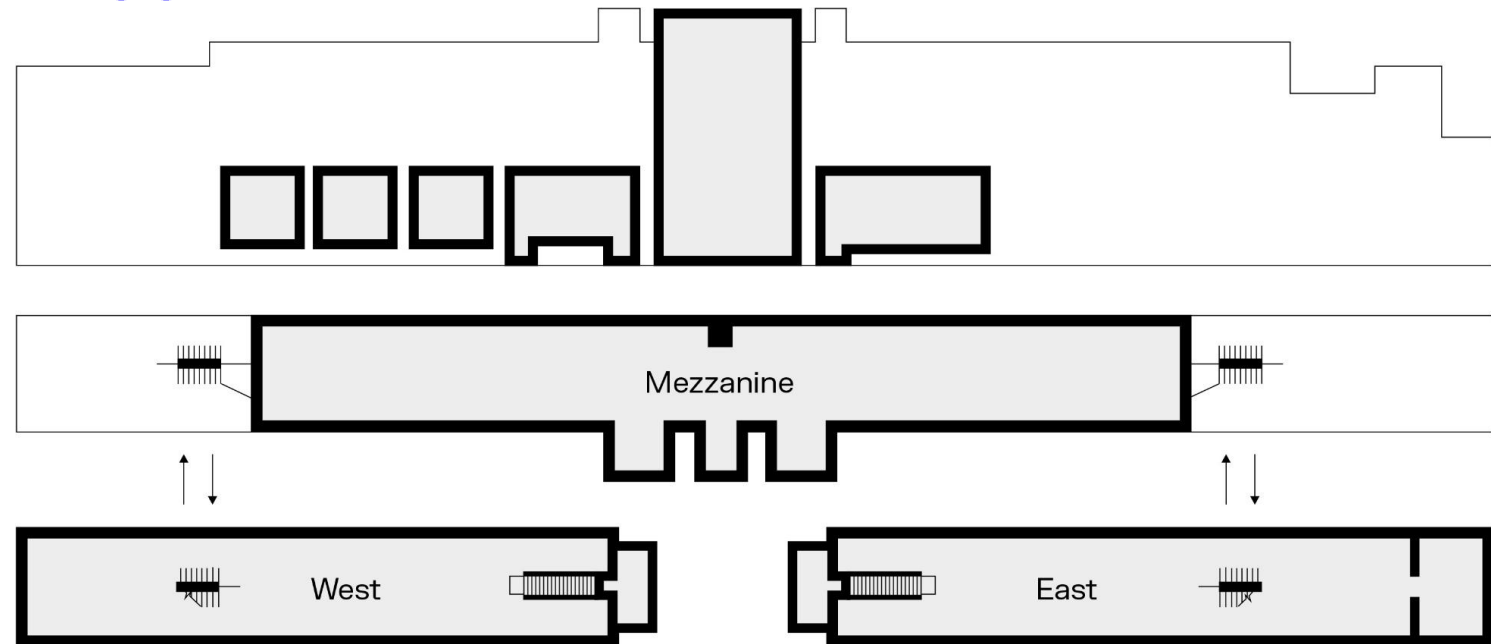
The Embankment Galleries offer a striking and contemporary setting ideal for larger festive events. Well-suited for larger numbers, the Galleries provide generous space across the ground floor and mezzanine- perfect for interactive activities, immersive experiences and high-capacity winter celebrations to run alongside your exclusive hire of the ice rink.

This expansive and flexible venue is an excellent choice for clients planning a larger event, with ample room for guests to enjoy festive experiences between multiple skating sessions.

## HIRE FEE

	ALL DAY
SUPPLIER ACCESS	07:30 – 23:00
GUEST ACCESS	08:30 – 22:00
HIRE FEE	£16,000 + VAT
ADDITIONAL HOURS	£1,500 + VAT per hour

## FLOORPLAN



# POST SKATE RECEPTION PACKAGES

## BROUGHT TO YOU BY JIMMY GARCIA CATERING

Experience the extraordinary with [JIMMY GARCIA CATERING](#). As one of the UK's leading luxury creative caterers, you'll enjoy unparalleled food experiences crafted to elevate your event, with dishes so memorable they'll stop you in your tracks.

Jimmy Garcia Catering has curated a bespoke package for your guests to enjoy after their time on the ice. Every element can be tailored to suit your vision, but the outline below gives a sense of what's available and the associated costs.

## SUGGESTED CATERING PACKAGE

To include:

- Handheld items: 3 per person
- Hot chocolate, tea & coffee, mulled wine
- Hydration station and soft drinks available throughout
- All food and drinks served in biodegradable disposable items
- Trestle tables with a cloth in a colour of your choice for the drinks service
- Chefs, managers and waiting staff included

## PRICES FROM

- 100 - 249 Guests: £112 + VAT per person
- 250 - 499 Guests: £87 + VAT per person
- 500 - 749 Guests: £73 + VAT per person
- 750 - 999 Guests: £68 + VAT per person
- 1,000 Guests: £65 + VAT per person

## ACTIVITY ADD-ONS

- Gingerbread cookie decoration: £9+VAT per person
- Chocolate bauble decorating from £39+VAT per person, (+ £500+VAT fee per chef)
- Winter Cocktails Masterclass from £40+VAT per person
- Wreath Making in collaboration with a Somerset House accredited florist, prices available on request.



# POST SKATE RECEPTION PACKAGES



JIMMY GARCIA  
CATERING

7

## SAMPLE MENUS

### HANDHELD ITEMS

- Croque Monsieur / Croque Florentine
- Beef slider
- 'Beyond Meat' vegan burger (VE)
- Chicken schnitzel burger
- Wild boar and apple hot dog
- Vegan hot dog (VE)
- Wild boar sausage rolls
- Skin on fries, smoked tomato ketchup

### SWEET SNACKS

- Mince pie donuts, filled with custard, topped with meat fruit and pastry crumb
- Chocolate brownie
- Chocolate and cranberry cookies
- Mini raspberry and rose Jam roly-poly

All options can be made more adult or child friendly based on your event requirements.

## OPTIONAL ENHANCEMENTS

### BOWL FOOD

- Crispy firecracker sprouts, jasmine rice, chilli, soy and rice wine glaze, smacked cucumber (VE)
- Mac and Cheese (V)
- Lamb meatballs, potato mash and gravy
- Torn burrata, pickled squash ribbons, sautéed seasonal squash, toasted hazelnuts, maple & orange dressing, chervil (GF) (V)
- Salmon, Horseradish crème fraiche, pickled cucumber, dill, chervil (GF)

### CANAPES

- Sesame and Delicia Squash Pops, agave and chilli ketchup (GF) (VG)
- Fish & Crisps - Battered hake, pea puree, new potato crisps, crispy capers, balsamic pearls
- Steak & Chip - Maris piper potato rosti, beef fillet carpaccio, green peppercorn emulsion, chives (GF)
- Carrot cone, goats cheese, orange zest, carrot and pistachio centre, carrot tops (V) (GF)
- Prawn Toast Scotch Egg, gochujang ketchup, pickled cucumber, toasted sesame



# YOUR BOOKING



## INCLUDED

Your hire includes event security, an Event Manager, a dedicated operations manager, and full pre- and post-event cleaning. Complimentary browsing Wi-Fi at 15Mbps is also provided, with upgrade options available at an additional cost.

The venue currently holds a late license for live events until 01:00. Extensions beyond this time can be requested and are subject to approval. We can also offer 24-hour access for event setup and breakdown.

## SUPPLIERS

All services must be fulfilled by our accredited suppliers and are not included in the venue hire fee. These will be provided by one of our accredited suppliers—details can be found [here](#). As Somerset House is a Grade I listed building, only accredited suppliers are permitted to work onsite.

Please allow a minimum of one hour for supplier setup before guest arrival and one hour for de-rig after guests depart. Depending on your event's requirements, suppliers may need additional time. If so, you can either amend guest timings or arrange extra hours outside your contracted Hire Period.

## BOOKING DETAILS

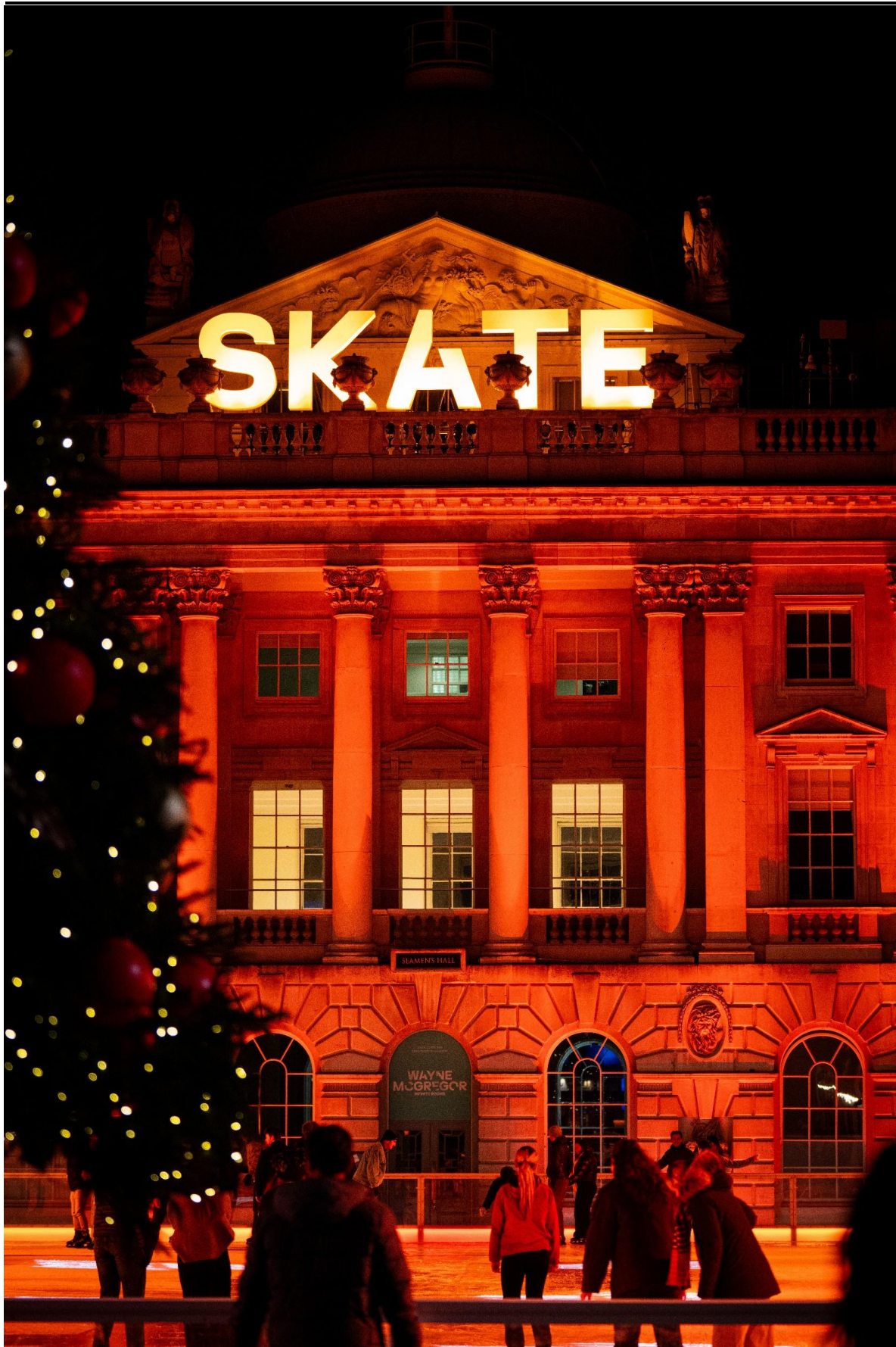
A refundable security deposit is required for all bookings. The amount depends on the duration of your hire and will be invoiced separately from the Hire Fee. The deposit will be returned within 30 days after your event, provided there is no damage and all contracted timings have been met.

Clients must hold public liability insurance of £10 million.

## OUR SITE

Somerset House is an active cultural destination with a year-round programme of exhibitions, installations, and public events. Please be aware that we cannot always confirm what activity may be taking place in nearby public areas on the day of your event, and essential building works may occasionally occur.

# GET IN TOUCH



Somerset House

## CONTACT

[events@somersethouse.org.uk](mailto:events@somersethouse.org.uk)  
+44 (0)20 7845 4618  
[somersethouse.org.uk/venue-hire](http://somersethouse.org.uk/venue-hire)

## FOLLOW

Instagram: [@somersethouse\\_venuehire](https://www.instagram.com/somersethouse_venuehire)  
LinkedIn: [Venue Hire at Somerset House](https://www.linkedin.com/company/venue-hire-at-somerset-house)

## FIND

Somerset House, Strand, London WC2R 1LA

### BY LONDON UNDERGROUND

Temple (Circle & District lines; 250m, 5 mins)  
Covent Garden (Piccadilly line; 650m, 8 mins)  
Charing Cross (Bakerloo & Northern lines; 700m, 10 mins)  
Embankment (Circle & District lines; 700m, 10 mins)  
Waterloo (Bakerloo, Waterloo & City, Jubilee & Northern lines; 800m, 11 mins)

### BY RAIL

Charing Cross (700m, 10 mins)  
Blackfriars (1km, 13 mins)  
Waterloo (1km, 13 mins)

### BY RIVER

River bus services RB1, RB2 and RB6 all stop at Embankment Pier, roughly 600m from Somerset House

Venue Hire

