

**A MAJOR LOCATION FOR FILM &  
PHOTOGRAPHY**



**SOMERSET  
HOUSE**



# SHOOT AT SOMERSET HOUSE

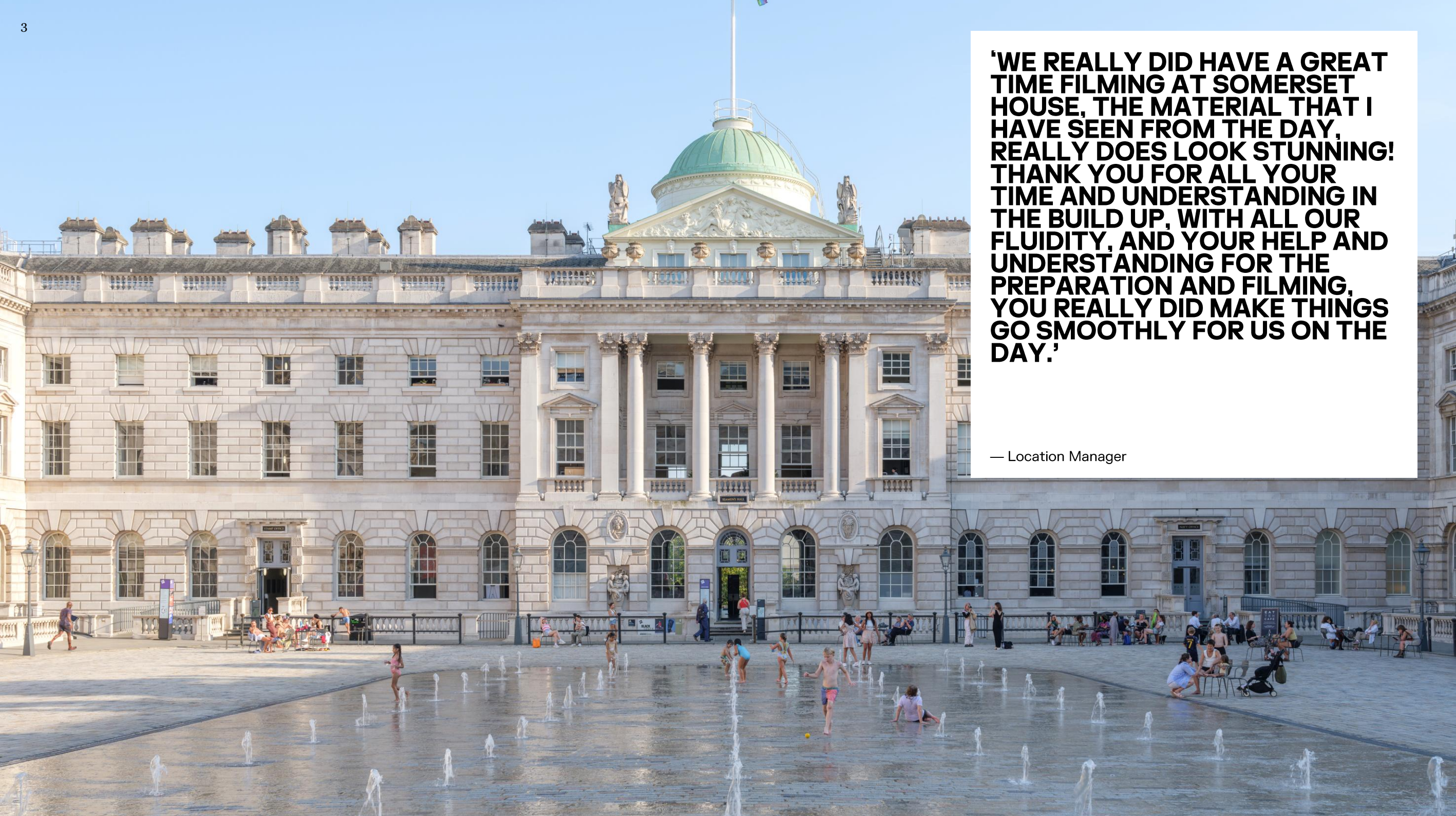
Somerset House is a singular, iconic and versatile backdrop for major motion pictures and television alike. With a wide variety of spaces and atmospheres, from the neoclassical courtyard to subterranean streets, Somerset House has provided the backdrop to a host of Hollywood blockbusters, award-winning television shows, advertising campaigns and many more commercial purposes.

With a storied past of its own, the unique versatility and timelessness of Somerset House's Georgian architecture sits our central London site as a set much beloved by filmmakers and location managers alike. From cinema to television, from fact to fiction — whether Ridley Scott's *Napoleon* (2023), *Suffragette* (2015), or the Marvel universe — Somerset House continues to be a versatile setting for both creative and commercial projects.

Although Somerset House sits between the Thames to the south and the Strand to the north, its quiet and seclusion sets it apart from the city as a world unto itself. William Chambers' renowned neoclassical architecture is transportive, unique and boasts sweeping staircases, subterranean spaces, elegant blank canvas rooms, atmospheric lightwells, terraces, rooftops, and our spectacular central courtyard to name but a few of the hires available, and our spaces are sought after locations for film and photography alike.







**'WE REALLY DID HAVE A GREAT TIME FILMING AT SOMERSET HOUSE, THE MATERIAL THAT I HAVE SEEN FROM THE DAY, REALLY DOES LOOK STUNNING! THANK YOU FOR ALL YOUR TIME AND UNDERSTANDING IN THE BUILD UP, WITH ALL OUR FLUIDITY, AND YOUR HELP AND UNDERSTANDING FOR THE PREPARATION AND FILMING, YOU REALLY DID MAKE THINGS GO SMOOTHLY FOR US ON THE DAY.'**

— Location Manager



# SOMERSET HOUSE ON SCREEN



NAPOLEON



OPERATION  
MINCEMEAT



BLACK DOVES



STRICTLY COME  
DANCING



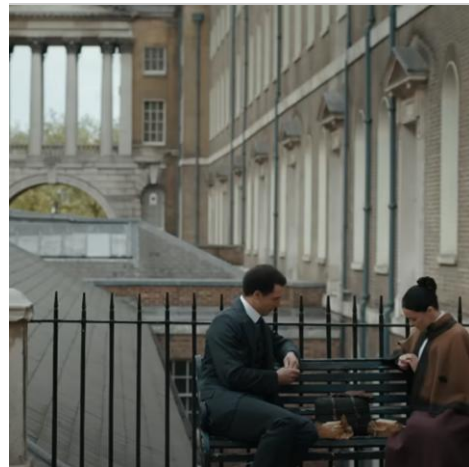
LOVE ACTUALLY



X-MEN: FIRST  
CLASS



H&M



THE ESSEX  
SERPENT



LONDON  
HAS FALLEN



SUFFRAGETTE



# EXTERNAL LOCATIONS



## EDMOND J. SAFRA FOUNTAIN COURT

Located just a few short steps from the bustling activity of the Strand, in the heart of London, the Edmond J. Safra Fountain Court is centred around the iconic fountains and surrounded on all sides by glorious 18th century architecture.



## LANCASTER PLACE

An external space situated outside our New Wing, just off Waterloo Bridge, featuring a grand entrance into the building.



## UPPER TERRACE

A firm favourite, with beautiful archways and a cobble walkway which stretches for more than 100 metres.



## RIVER TERRACE

Offers views of the Southbank and the River Thames, whilst also retaining the neoclassical architecture as a backdrop.

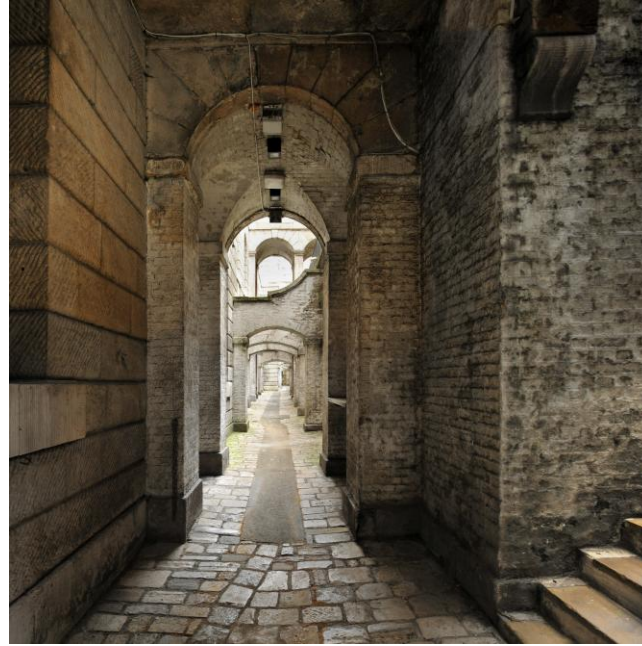


# EXTERNAL LOCATIONS



## MAKERSTREET

Situated underneath Waterloo Bridge, and with camera positions from Lancaster Place, Maker Street is ideal for street scenes. Vaulted studios can also be transformed and used as a location.



## LIGHTWELLS & DEADHOUSE

One level below our fountains, running along three sides of the courtyard, are the lightwells - a long-time favourite, with its unique architecture, unexpected hidden depths and an abundance of secret nooks and crannies.

The Deadhouse, meanwhile, is an underground tunnel which runs directly beneath the courtyard, with eerie memorials set into the walls. A versatile space without the need for large amounts of production.

Venue Hire



## ROOFTOPS

From our commanding series of rooftops, you'll find the perfect shot of the London skyline, with views across the city, Waterloo Bridge and River Thames - taking in the Southbank, the London Eye, with Westminster to the East, and St. Paul's Cathedral to the West. Ideal for high level shots, camera positions, stunts and chase scenes.



## BALCONIES

Our building also offers two private balconies – one overlooking the River, and the other overlooking our Edmond J.Safra Fountain Court.

In addition to our key locations, we have a flexible approach to finding new spaces at Somerset House.



# INTERNAL LOCATIONS



## SEAMEN'S HALL

Connected to the River Terrace, this room offers a sense of grandeur with its chandeliers, dramatic pillars, stone floors and large windows. (this space acts as our daytime reception, exclusive access only available after 18:00).



## NAVY BOARD ROOMS

One of our most traditional spaces, with grand chandeliers and marble backed fireplaces.



## EAST & WEST WING

With feature fireplaces, long corridors, wooden floors and large sash windows, the East and West Wings are great film or photoshoot location. They can also be used for spacious back of house spaces during shoots.



## LANCASTER ROOM

A versatile suite of rooms with a creative and raw aesthetic, featuring dramatic pillars, high ceilings and exposed floorboards - set against the stunning views of the Thames. This room takes the original features of Somerset House and adds a contemporary cutting edge.



## PORTICO ROOMS

Portico Rooms feature two balconies, one offering views of the River Thames, Waterloo Bridge and the Southbank, and the other of our iconic Edmond J. Safra Fountain Court.

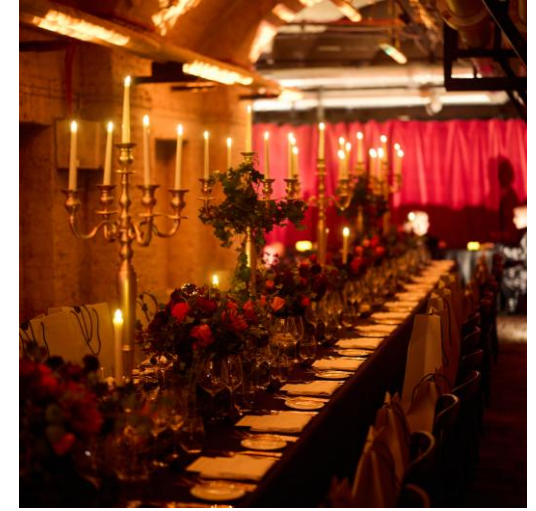
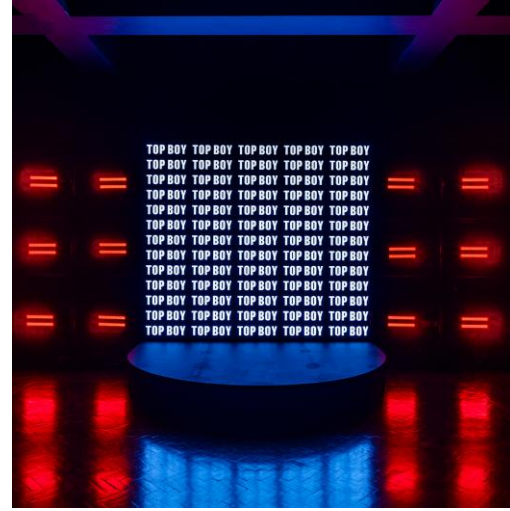
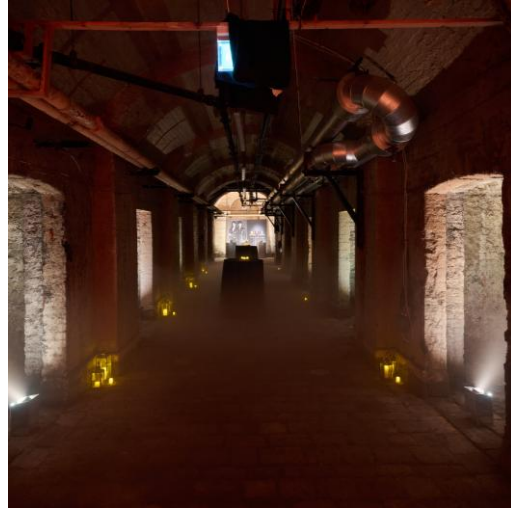


## RIVER ROOMS

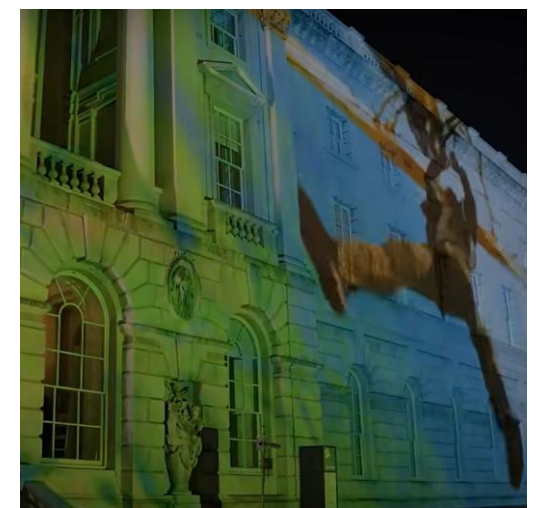
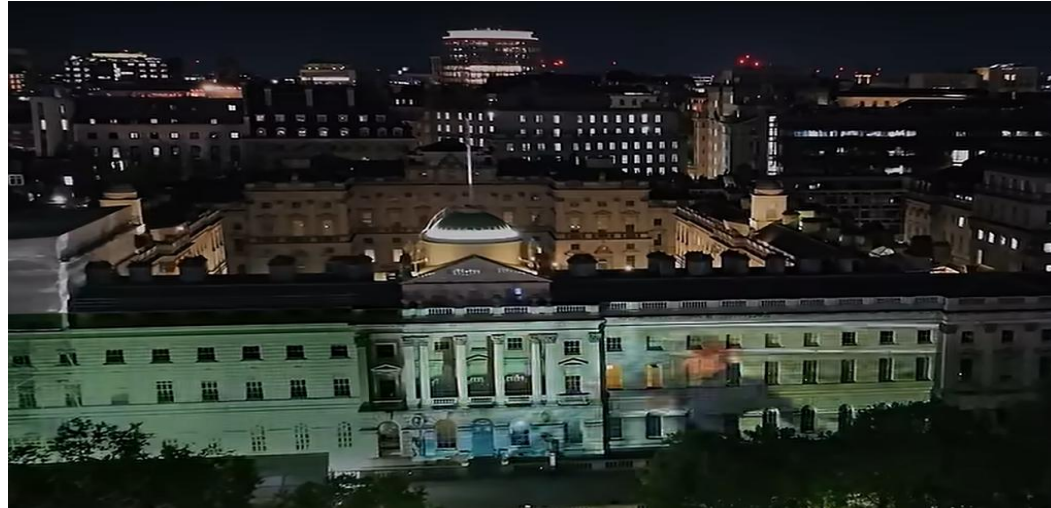
The interlinking, open plan rooms have custom-built lighting tracks, complete with dramatic original fireplaces and exposed brick archways.



# PREMIERES, LAUNCHES & AFTER PARTIES



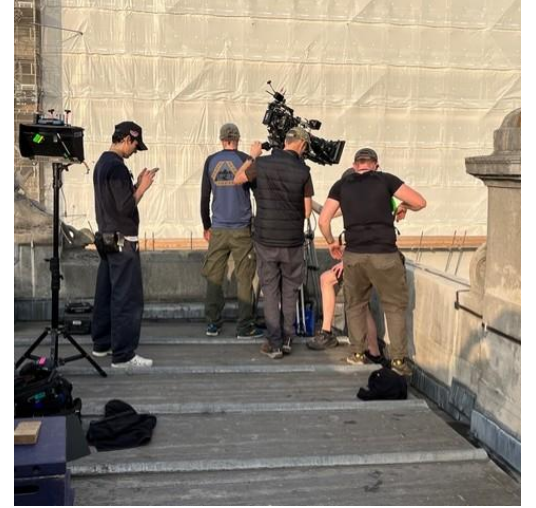
Somerset House has played host to high-profile premieres, VIP afterparties, and major launches — including standout moments for Top Boy and Nosferatu. As a heritage venue with undeniable screen presence and cinematic scale, it offers a dramatic backdrop for unforgettable storytelling — both on camera and at red-carpet events.





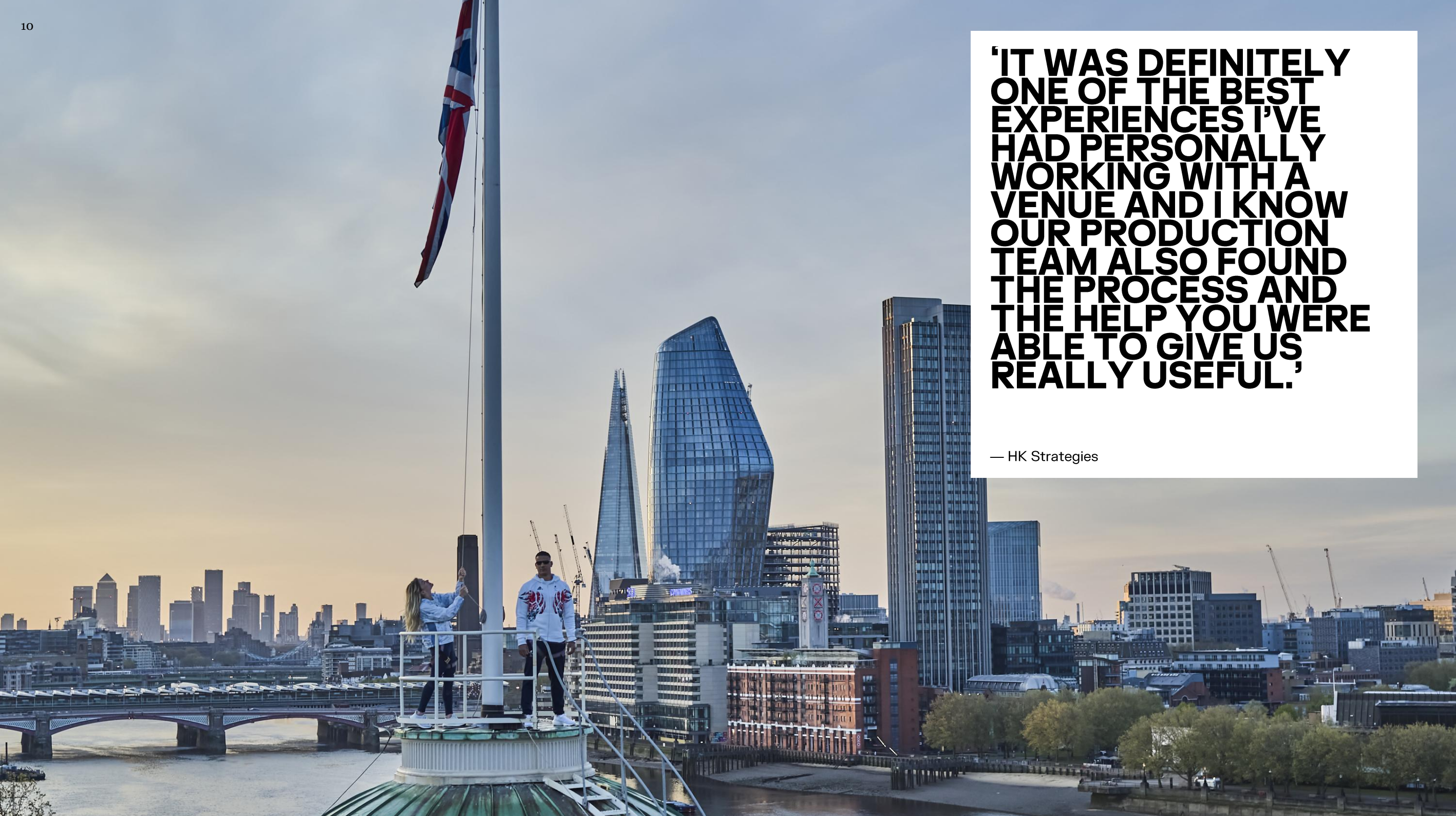
# STAIRCASES, CORRIDORS, BACK OF HOUSE, VIDEO VILLAGES, CAMERA POSITIONS, PARKING, TOILETS AND MORE...

9



OUR WELL-CONNECTED, CENTRAL LONDON LOCATION MEANS WE ARE PERFECTLY SITUATED TO HOST YOUR PRODUCTION, CAST AND CREW – FROM CRAFT SERVICE AREAS TO STORAGE & GREEN ROOMS. WE OFFER REDUCED RATES FOR THESE ELEMENTS AND ARE VERY HAPPY TO ACCOMMODATE!





**'IT WAS DEFINITELY  
ONE OF THE BEST  
EXPERIENCES I'VE  
HAD PERSONALLY  
WORKING WITH A  
VENUE AND I KNOW  
OUR PRODUCTION  
TEAM ALSO FOUND  
THE PROCESS AND  
THE HELP YOU WERE  
ABLE TO GIVE US  
REALLY USEFUL.'**

— HK Strategies



# GET IN TOUCH

## CONTACT

[events@somersethouse.org.uk](mailto:events@somersethouse.org.uk)

+44 (0)20 7845 4618

[somersethouse.org.uk/venue-hire](https://somersethouse.org.uk/venue-hire)

## FOLLOW

Instagram: [@somersethouse\\_venuehire](https://www.instagram.com/somersethouse_venuehire)

LinkedIn: [Venue Hire at Somerset House](https://www.linkedin.com/company/venue-hire-at-somerset-house)

## FIND

Somerset House, Strand, London WC2R 1LA

## BY LONDON UNDERGROUND

Temple (Circle & District lines; 250m, 5 mins)

Covent Garden (Piccadilly line; 650m, 8 mins)

Charing Cross (Bakerloo & Northern lines; 700m, 10 mins)

Embankment (Circle & District lines; 700m, 10 mins)

Waterloo (Bakerloo, Waterloo & City, Jubilee & Northern lines; 800m, 11 mins)

## BY RAIL

Charing Cross (700m, 10 mins)

Blackfriars (1km, 13 mins)

Waterloo (1km, 13 mins)

## BY RIVER

River bus services RB1, RB2 and RB6 all stop at

Embankment Pier, roughly 600m from Somerset House

